



COOMBE END

COTSWOLDS



LUXURY COTSWOLD RENTALS

a member of **UV** ULTRAVILLA



Coombe End Manor

Welcome to Coombe End Manor

Experience exclusivity at its finest: tailored experiences, premium services and unforgettable stays at a luxurious Cotswold Manor House.

As soon as you arrive at Coombe End, you realise you have stepped into something magical. Only 7 miles from Cheltenham, the Manor House sits at the centre of a 2000-acre private estate in the heart of the Cotswolds, surrounded by breathtaking views, sprawling woodland and an abundance of wildlife. Coombe End offers undisputable privacy and tranquility far from the madding crowd.





A long time ago, in the 1500s, part of Coombe End was a friary, but time and masterful craft turned it into our luxurious romantic manor house, equipped with only the best modern comforts.

Relax in one of our beautifully designed bedrooms, sleeping up to 18 guests in the main building (plus 2 guests in the annexe building, ideal as a staff/nanny room). Each room is unique and individually designed to combine modern taste with its classical charm.

Enjoy a massage in our house spa. Go for a swim in our outdoor heated swimming pool. Try your hand on our brand-new tennis court.

Have a true banquet in our 'Medieval' hall warming up by the fireplace. Or enjoy your meal in our outdoor dining room, overlooking the gardens and the Cotswolds Hills. Make memories. Immense thought and care go into crafting each guest's experience to the highest standards.

Perfect for private and corporate hire, family holidays, weddings, weekend breaks, wellness retreats, and other events, Coombe End offers you and your guests unforgettable experiences to relish.



Reception & Rooms

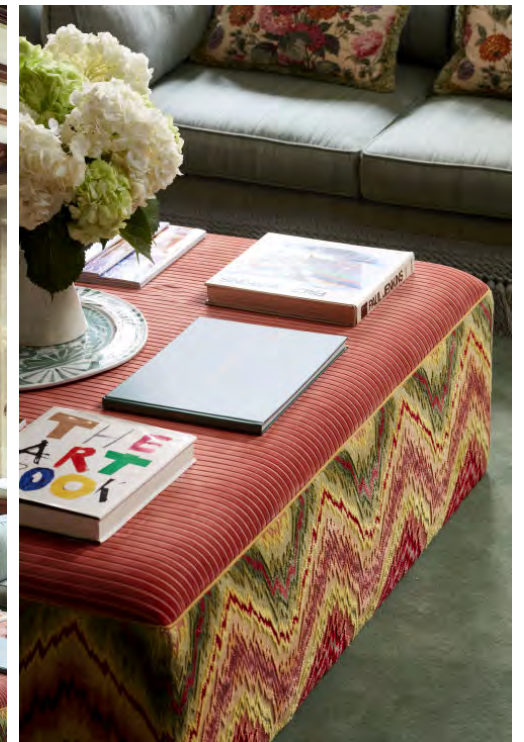
From the moment you arrive, it's clear that you and your guests are in for a special treat.

The attention to detail is evident everywhere you look, each room's design is unique, rich and colourful, exuding historical charm and sophistication. As you wander, you realise Coombe End is a manor house like no other.





Our Medieval-style Banqueting Hall seats 20 people and features beautiful wood ceiling beams and stone walls. Perfect for a feast. Enjoy an afternoon tea on a plush sofa by the large fireplace.





With three sitting rooms and a bespoke bar, you can choose your favourite spot to relax. Read or have a chat in front of a cup of tea or a glass of wine from the Manor's cellar, among chosen antiques, throwback portraiture, working fireplaces, thick rugs, and deep-filled sofas.



Our shaker-style Cotswold kitchen is fully equipped. For an extra charge, you can hire our highly skilled and personal private chefs and wait staff. All meals are planned ahead of your stay and menus are tailored to you and your guests, from breakfast to afternoon tea and special-occasion dinners.

The 'friary wing' offers a fantastic private house office, a household gym, our Club Room, and a twin bedroom (ideal as a staff/nanny bedroom). Chill in our 'Club' room with a flat screen television, darts, and a pool table





Garden Bedroom

First Floor Double Bedroom Ensuite (28' x 18')
with walk-in shower and bath

Bedrooms

Enjoy your stay in one of our beautifully designed bedrooms, sleeping up to 18 guests in the main building (plus 2 guests in the 'friary wing', ideal as a staff/nanny room).

Each room is unique, individually designed to combine modern taste with its classical charm, a marvel of interior design inspired by beautiful colours and motifs, with wonderful views over the house gardens.





Pink Bedroom



First Floor Double Bedroom Ensuite (20' x 16')
with walk-in shower and bath

Train Bedroom



Second Floor Double Bedroom (23' x 22')
with in-room freestanding roll top bath



Blue Bedroom



First Floor Double Bedroom Ensuite (21' x 15')
with bath



Orange Bedroom



First Floor Double Bedroom Ensuite (14' x 12')
with bath



Green Bedroom



Second Floor Double Bedroom Ensuite (18' x 14')
with walk-in shower



Chinese Bedroom



First Floor Double Bedroom with Bathroom
across corridor (21' x 11')
with bath



South Bedroom



Second Floor Double Bedroom sharing
Bathroom with Twin Bedroom (14'0 x 11')
with bath and overhead shower

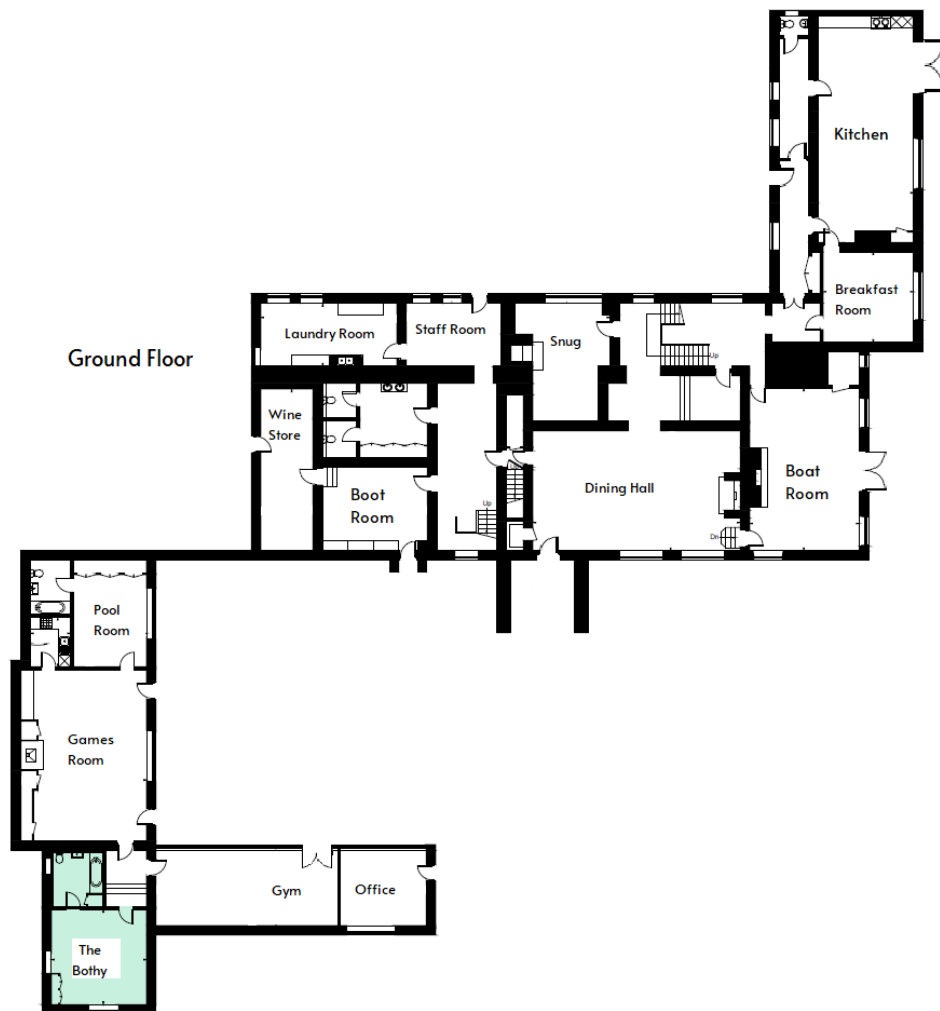
Twin Bedroom



Second Floor Twin Bedroom (available as a
double) sharing Bathroom with South Bedroom
(14' x 11')
with bath and overhead shower

Coombe End Manor – Floor Plan

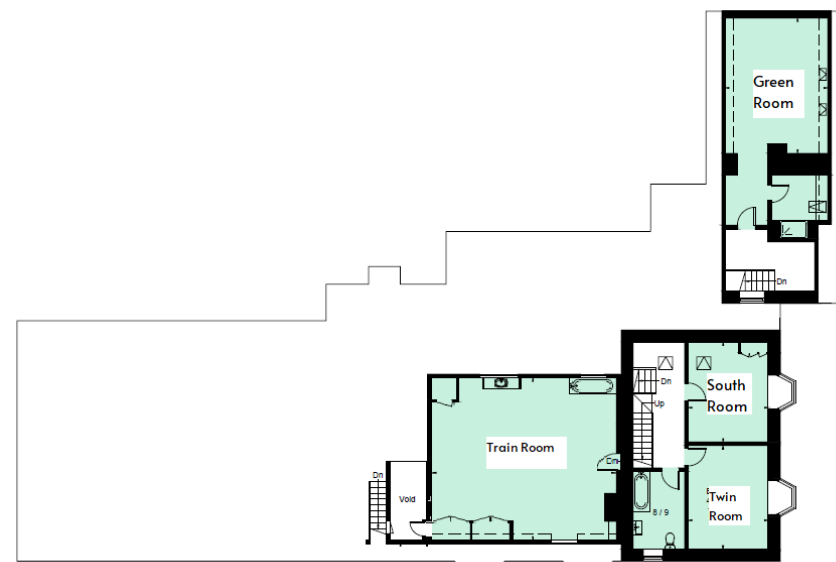
Ground Floor



First Floor



Second Floor

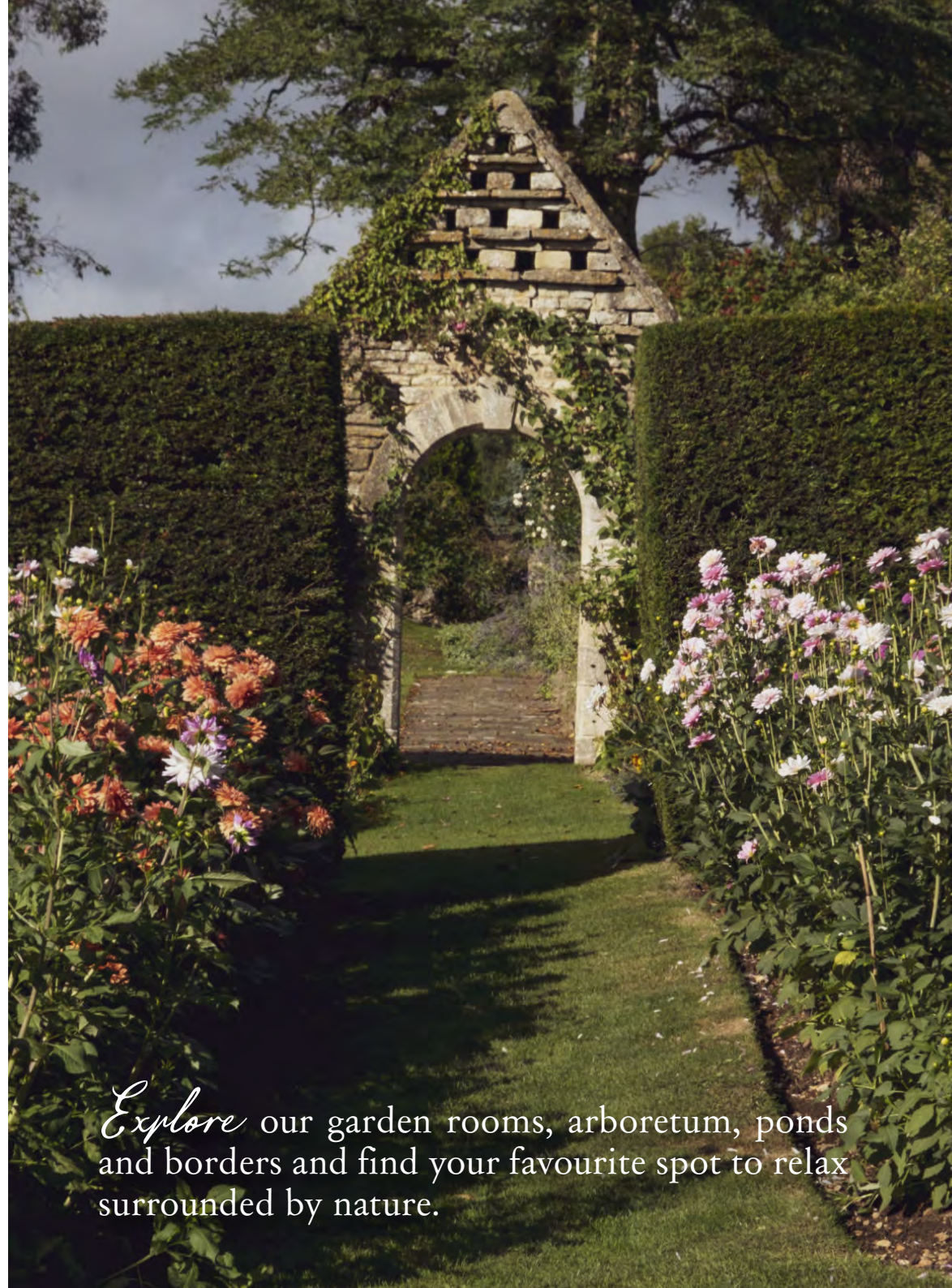


Approximate Area = 1084.5 sq m / 11673 sq ft

Annexe Outbuilding = 196.3 sq m / 2113 sq ft

Grounds & Gardens

*T*he views alone will make you want to come back. Whether you want to relax or stay active, Coombe End's grounds and gardens offer our guests plenty of choices. Go for a swim in our outdoor heated swimming pool and hot tub by the house spa with changing facilities. Try our brand-new hard tennis court.



Explore our garden rooms, arboretum, ponds and borders and find your favourite spot to relax surrounded by nature.



Coombe End's gardens were partly redesigned by Gertrude Jekyll, Britain's celebrated garden designer and horticulturalist, in the early 20th century and have been preserved and nurtured to this day. Not to be missed.

Get together with friends and family, in our outdoor dining room, comfortably sitting 20 guests. It's perfect for an aperitif or for a special dinner al fresco, overlooking the gardens and Cotswolds Hills. Warm up with our outdoor firepits and enjoy the integrated sound system. You won't be far from our beautiful spa and swimming pool to go for a dip either.



With over 2000 acres of land, Coombe End offers tranquil walks surrounded by the Cotswolds landscape and wildlife.





Pool & Spa



Whether you want to relax or get active, our beautiful estate offers lots of unique and invigorating experiences for those seeking to rejuvenate their mind, body, and soul.



Relaxation Room



Induction Room



Therapy Room n. 1

Make the most of our luxury amenities.





Relaxation Room



Therapy Room n.2

Visit our brand-new House Spa for massages and beauty treatments.



Go for a swim: our outdoor all-year-round heated swimming pool offers relaxing toasty dips in colder months and a refreshing escape on warmer summer days.



Relax in our brand-new sauna (sitting up to 6 people). Chill in the cold plunge bath for a refreshing thrill. Or jump in the hot tub. Stunning views of the Cotswolds landscape are always included.



Our Offer

We comfortably sleep up to 18 guests, across our beautiful, individually designed and unique bedrooms.

The Manor House offers the following:

- Sleeps up to 18 guests (+ 2 guests in a separate twin bedroom for staff/nanny in the annexe building).
- 8 beautifully designed double bedrooms and 1 twin bedroom, with panoramic views across the gardens and wider estate.
- Medieval-style banquet hall, formal drawing room & two sitting rooms all with fireplaces.
- Modern, fully equipped Cotswold kitchen with Aga and adjacent breakfast room.
- Household gym, including treadmill, Hydrow rowing machine and weights equipment.
- Private office.
- 'Club' room with flat screen television, darts and pool table.
- Fibreoptic Broadband with house-covering Wi-Fi, integrated Sonos sound system across reception rooms, Bluetooth ready digital radios in all bedrooms.
- Housekeepers as part of your stay. Usual hours of 08.00-17.00 M-F.



The gardens and grounds offer the following:

- 16m heated, outdoor pool with adjoining pool house/changing facilities and integrated Bose sound system.
- Full spa set-up with sauna, hot tub, cold plunge bath and treatment rooms
- Outstanding, newly laid hard tennis court.
- Outdoor private dining room, with Cotswold views.
- Extensive formal gardens, including reception lawns, borders and our ornamental pond, all set in 2000 acres of private, breath-taking Cotswold scenery.
- Helicopter landing available.



Bespoke services

At Coombe End Manor, we are committed to providing our guests with the very best in luxury hospitality. In addition to the extensive range of amenities included in the price of your stay, we can also offer you several exclusive services and experiences to further complement your stay (available through separate negotiation). These activities have been carefully curated to enhance your stay at Coombe End. This includes, but is not limited to:

- ∞ Our highly skilled and personal private chefs and wait staff.
- ∞ Menu creation and access to our wine cellar and fine wine collection.
- ∞ In-house laundry service.
- ∞ A range of spa treatments including massage, facials, manicure and pedicure.



Activities

We understand that every guest is unique, and we take pride in providing services that are tailored to your individual needs and preferences. We work with trusted local businesses that we have built a relationship over time.

These are some of the bespoke activities and experiences we organise for our guests:

Clay pigeon shooting

Archery

Falconry

Horse riding

Off-road quad biking

Hot air ballooning

Outdoor cinema (evening only)

Yoga

Tennis & Padel coaching

Artisan gin masterclass with cocktails

Cake decorating



Our stays are completely bespoke. If there's an activity you are interested in that isn't listed here and you're looking to add an extra touch of fun to your stay, we can turn it into a reality.

Things to do in the area

Visit the Elkstone Studios, only 10 minutes walk from the Manor, a thriving lifestyle workspace hosting businesses specialised in design, food, wellness and retail, including a delightful farm shop & café, a state-of-the-art gym, a padel court and a playground. Office and event spaces are available for hire, ideal for corporate meetings and events. www.elkstone-studios.com

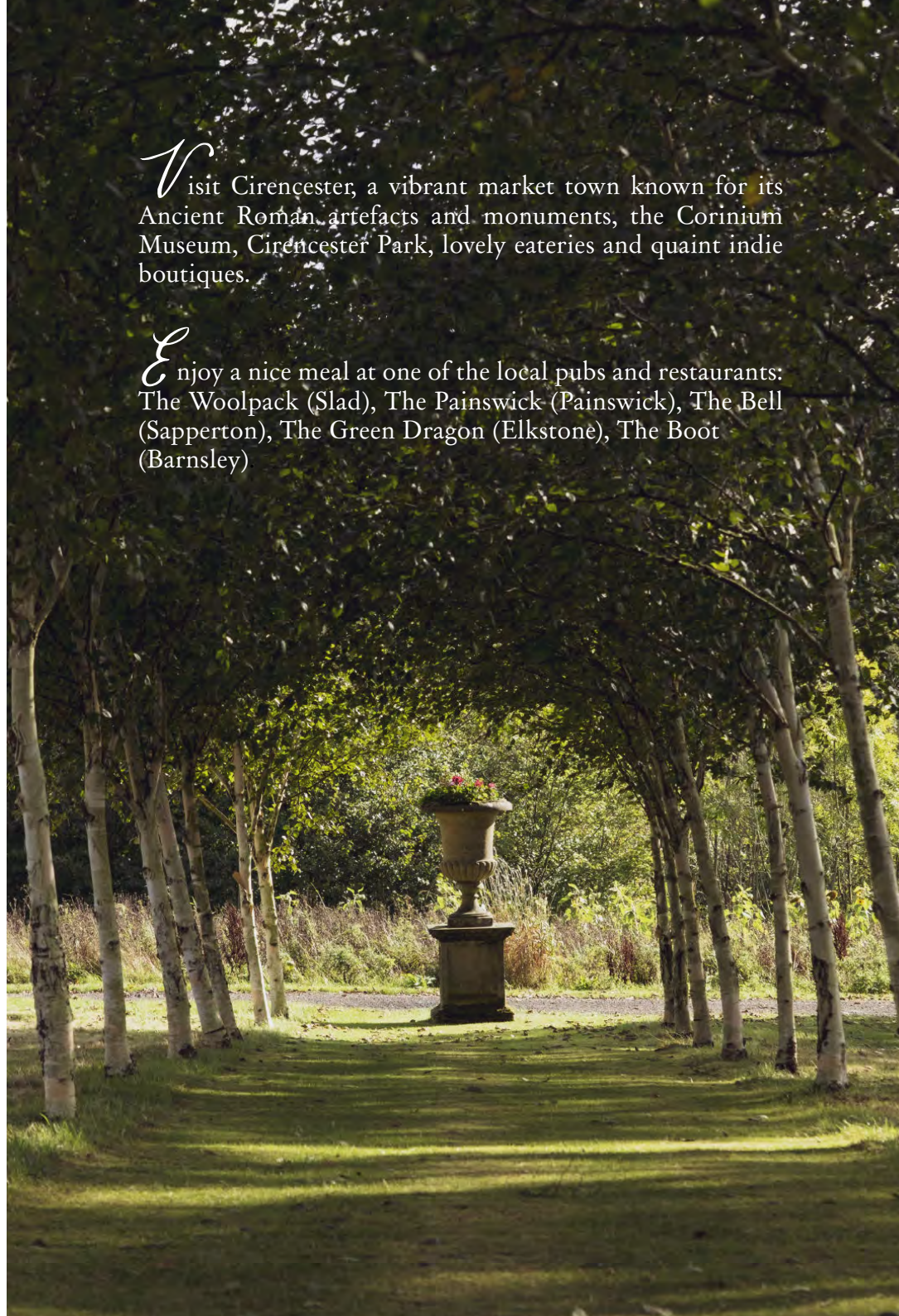
Explore the Cotswolds, an English countryside area of outstanding natural beauty renowned for its astonishing walks, trails and cycle routes, archaeological sites and more.

Visit Cheltenham, a picturesque regency town which offers plenty of attractions for visitors to explore, from its beautiful architecture and scenic parks to its bustling shopping districts and cultural events such as the Cheltenham Literature Festival and the world-famous horse races at the Cheltenham Racecourse. Visit The Wilson Museum, Gloucestershire's premier art gallery and museum.



Visit Cirencester, a vibrant market town known for its Ancient Roman artefacts and monuments, the Corinium Museum, Cirencester Park, lovely eateries and quaint indie boutiques.

Enjoy a nice meal at one of the local pubs and restaurants: The Woolpack (Slad), The Painswick (Painswick), The Bell (Sapperton), The Green Dragon (Elkstone), The Boot (Barnsley)





What our guests like about Coombe End Manor is that is easy to get to while offering undisputable privacy and tranquillity.

Directions

By car:

Only 15 minutes from Cheltenham and 10 minutes from Cirencester by car.

Only 90-120 minutes from London by car, via the M4.

By train:

Easy to reach by train: direct services run from London Paddington to Kemble (1.10 hr).

Nearby airports:

London Heathrow is a 90-minute drive away.

Birmingham Airport: 60-90 minutes by car.

Bristol Airport: 60 minutes by car.

Private flights:

Oxford Airport: 45 minutes

Gloucestershire Airport: 20 minutes

We can arrange transfers for you on request.

If you have a helicopter, you can land on the Manor grounds. Please get in touch with us for more information.





LUXURY COTSWOLD RENTALS

a member of **UV** ULTRAVILLA



COOMBE END
COTSWOLDS
